

COMMUNITY RESOURCES FOR CHILDREN



DEVELOPMENTAL AND EDUCATIONAL CONCERNS

ABUSE & NEGLECT

HEALTH

BEHAVIORAL HEALTH

AGES 0-3

GATEWAYS COMMUNITY SERVICES

(formerly Area Agency)

INTAKE
459-2764
ELIGIBILITY

33% delay in physical, cognitive, communication, social-emotional, or adaptive development
OR at risk for developmental delay
OR established diagnosed condition

LOCAL PROVIDERS

CHILDREN'S PYRAMID

GATEWAYS EARLY SUPPORTS and SERVICES

SUNRISE EARLY INTERVENTION

MULTI-SENSORY INTERVENTION THROUGH CONSULTATION & EDUCATION (MICE)

visual & hearing impairments

AGES 3-5

PRESCHOOL SPECIAL EDUCATION

CALL SCHOOL DISTRICT

AMHERST
673-2343

BROOKLINE
465-9182

HOLLIS
465-2260

HUDSON
595-1570

LITCHFIELD
424-5931 ex 1126

MASON
878-0831

MERRIMACK
424-6215

MILFORD
673-4434

MONT VERNON
673-5141 ex 205

NASHUA
594-4300 ex 1161

WILTON
878-8102

CHILD CARE

SNHS Child Care R&R
889-3440 ex 39
AND
883-7726 ex 718

CITY OF NASHUA CHILD CARE SERVICES OFFICE
589-4540

AGES 3-5

SOUTHERN NH SERVICES HEAD START

OFFERS
MENTAL HEALTH &
DISABILITY SUPPORTS

INCOME GUIDELINES
FOR ELIGIBILITY
889-7812

NASHUA SCHOOL DISTRICT
AGE 4 TITLE 1
READING SERVICES
889-5900

A PROJECT OF THE GREATER NASHUA BIRTH TO SIX MENTAL HEALTH TEAM

SUPPORTED BY A GRANT FROM THE NH CHILDREN'S CARE MANAGEMENT COLLABORATIVE 2008

AGES 5-21

REGULAR EDUCATION 504 PLANS & SPECIAL EDUCATION IEP PLANS

Call Local School

SCHOOL DISTRICT SPECIAL EDUCATION CONTACTS

AMHERST
673-2690

BROOKLINE
465-7118

HOLLIS
465-7118

HUDSON
886-1253

LITCHFIELD
578-3570

MASON
879-1026

MERRIMACK
424-6200

MILFORD
673-2202

MONT VERNON
673-2690

NASHUA
594-4300

WILTON
878-8102

AGES 18-21

GATEWAYS COMMUNITY SERVICES TRANSITION COORDINATOR
Ages 16-21
882-6333

NH VOCATIONAL REHABILITATION
1-800-299-1647
NASHUA OFFICE
889-6844 V/TTY

DIVISION OF ELDERLY & ADULT SERVICES
1-800-351-1888
1-800-735-2964 TDD

- Adult Protection
- Housing
- Home / Community Services
- Prescription Assistance
- Service Link

NH DEPARTMENT OF EDUCATION
ADULT EDUCATION GED ADMINISTRATOR
271-6698

OFFICE OF THE PUBLIC GUARDIAN
224-8041

SOCIAL SECURITY
NASHUA OFFICE
1-800-772-1213

AGES 0-18

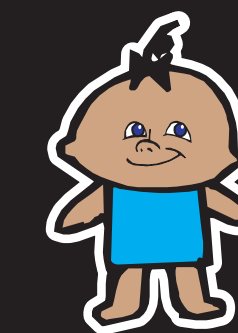
NH DIVISION FOR CHILDREN YOUTH AND FAMILIES
CENTRAL INTAKE
1-800-894-5533

AFTER HOURS REPORTS

CALL LOCAL POLICE DEPARTMENT

DCYF LOCAL DISTRICT OFFICE
883-7726

Every effort has been made to provide complete and accurate information. The Team apologizes for any omissions. This information does not serve as an endorsement of any agency or the quality of their services.



ANY AGE

NH BUREAU OF MATERNAL & CHILD HEALTH
1-800-852-3345 ex 4517
1-800-735-2964 TDD
• Child Health Program
• Early Hearing Detection and Intervention
• Newborn Screening

NH BUREAU OF SPECIAL MEDICAL SERVICES
1-800-852-3345 ex 4488
1-800-735-1964 TDD
• Children With Special Health Care Needs
• Child Development
• Neuromotor
• Nutrition, Feeding & Swallowing

CHILD HEALTH SERVICES
Child Development Clinic
Diagnostic Evaluations
606-5456

CROTCHED MOUNTAIN REHABILITATION CENTER
1-800-258-1466
547-3311

DARTMOUTH HITCHCOCK CHILD DEVELOPMENT PROGRAM
1-800-556-6249
OR 650-8034 TTY

EASTER SEALS
1-800-870-8728
623-8863 TTY

• Children & Youth Services
• Autism Diagnostic & Treatment Network

KIDZ PLAY
437-3330

• Pediatric Therapies
• Sensory Integration Services

NH PARTNERS IN HEALTH
1-800-656-3333
NASHUA 459-2774
Support to families of children with chronic health conditions

ANY AGE

COMMUNITY MENTAL HEALTH SERVICES AT COMMUNITY COUNCIL OF NASHUA
889-6147

CLINIC & COMMUNITY BASED SERVICES

PSYCHIATRY

YOUNG ADULT PROGRAM AGES 15-21

GREATER NASHUA VISITATION CENTER

CHILD IMPACT PROGRAM

COURT DIVERSION PROGRAM

BRIDGES

Domestic Violence

HOTLINE
883-3044

NASHUA
889-0858

MILFORD
672-9833

CHILD & FAMILY SERVICES

Parenting Plus
Healthy Families
Home Visiting

1-800-640-6486
NASHUA
889-7189

MILFORD REGIONAL COUNSELING SERVICES
673-2508

MILFORD MEDIATION
672-2711

NASHUA MEDIATION
589-4550

NH CATHOLIC CHARITIES
Counseling
1-800-562-5249
NASHUA
889-9341

THE YOUTH COUNCIL
Child Assault Prevention Project
Parenting Classes
889-1090

LOCAL RESOURCES

Adult Learning Center www.adultlearningcenter.org	882-9080
Gateways Community Services www.gatewayscs.org	882-6333
Bridges www.bridgesnh.org	Hotline 883-3044
Child & Family Services www.cfshn.org	1-800-640-6486 Nashua 889-7189
City of Nashua Child Care Services Office	589-4540
Community Council of Nashua www.ccofnashua.org	889-6147
Greater Nashua Dental Connection www.hhbc.org	879-9314
Home Health & Hospice Care www.hhbc.org	1-800-887-5973
Milford Mediation www.milfordnh.com	672-2711
Milford Regional Counseling Services www.mrcs.org	673-2508
Nashua Area Health Center www.lampreyhealth.org	883-1626
Nashua Mediation www.nashuaqscend.com	589-4550
NHDHHS Nashua District Office	883-7726

Southern NH Services Head Start	889-7812
Nashua Child Care Resource & Referral WIC www.snhs.org	889-3440 x 39 889-3440 x 23
Youth Council www.theyouthcouncil.org	889-1090

NH RESOURCES

Autism Society of New Hampshire www.autism-society-nh.org	898-0916
Crotched Mountain Rehabilitation Center www.crotchedmountain.org	547-3311
Dartmouth-Hitchcock www.dhmc.org	1-800-556-6249
Disability Rights Center www.drcnh.org	1-800-834-1721 V/TTY
Easter Seals NH www.nh.easterseals.com	1-800-870-8728
EdTech Associates- Assistive Technology, Evaluation, Consultation & Training for the Learning Disabled www.edtech-associates.com	424-4534

Family Resource Connection (State Library) www.nh.gov/nhsl/frc/	1-800-298-4321
Granite State Federation of Families for Children's Mental Health www.ficmh.org	296-0692
HEAR in New Hampshire (auditory-oral education for young deaf/hard of hearing children) www.hearinnh.org	624-4464 V/TDD
Kidz Play www.kidzplay.org	437-3330
National Alliance for the Mentally Ill NAMI-NH www.naminh.org	1-800-242-6264
NH Assistive Technology Evaluation & Consultation Services (NH-ATEC) www.nhassistivetechology.org or www.crotchedmountain.org	1-800-932-5837 or 528-3060
NH Catholic Charities www.catholiccharitiesnh.org	1-800-562-5249
NH Connections c/o Parent Information Center (collaboration among families, schools, & community)	1-800-947-7005 or 224-7005 V/TDD
NH Department of Education www.ed.state.nh.us	271-3494 TDD Access: Relay NH:711

NH Division of Health and Human Services (DHHS) NH Bureau of Maternal and Child Health 1-800-852-3345 x 4517 NH Bureau of Special Medical Services 1-800-852-3345 x 4488 www.dhhs.state.nh.us	
NH DHHS Minority Health Office 271-3986 or 1-800-735-2964 TDD (assistance in accessing DHHS services) www.dhhs.state.nh.us/DHHS/MHO/default.htm	
NH Family Voices 1-800-852-3345 x 4525 or 271-4525 (parent support, resources, lending library for special needs) www.nhfv.org	
NH Healthy Kids Insurance 1-877-464-2447 or 228-2925 www.nhhealthykids.org	
NH Legal Assistance - Nashua www.nhla.org	1-800-517-0577 or 1-800-634-8989 TTY
NH Minority Health Coalition (health advocacy) www.nhhealthequity.org	1-866-460-9933 or 627-7703
NH Partners in Health www.nhpih.dartmouth.edu	1-800-656-3333
NH Vocational Rehabilitation www.ed.state.nh.us	1-800-299-1647 Nashua 889-6844 V/TTY

NH Special Olympics www.sonh.org	1-800-639-2608 or 624-1250
Northeast Deaf & Hard of Hearing Services www.ndhhs.org	224-1850 or 224-0691 TTY
Parent Information Center 1-800-232-0986 or 224-7005 V/TTY (education, support, referrals regarding disabilities) www.parentinformationcenter.org or www.picnh.org	
Parent-to-Parent of NH (parent information & support regarding disabilities) www.parenttoparentnh.org or www.p2pnh.org	1-800-698-5465
Preschool Technical Assistance Network (PTAN) at Southeastern Regional Education Service Center (SERESC) (agency consultations and technical assistance) www.ptan.seresc.net or www.seresc.k12.nh.us	206-6800
Relay New Hampshire (TDD Access) www.relaynewhampshire.com	1-800-735-2964
Services for the Blind and Visually Impaired (employment and rehabilitation services for ages 14+) www.nhsvi.com	271-3537
Social Security www.ssa.gov	1-800-772-1213
UNH Cooperative Extension (parent workshops and information) www.extension.unh.edu	641-6060