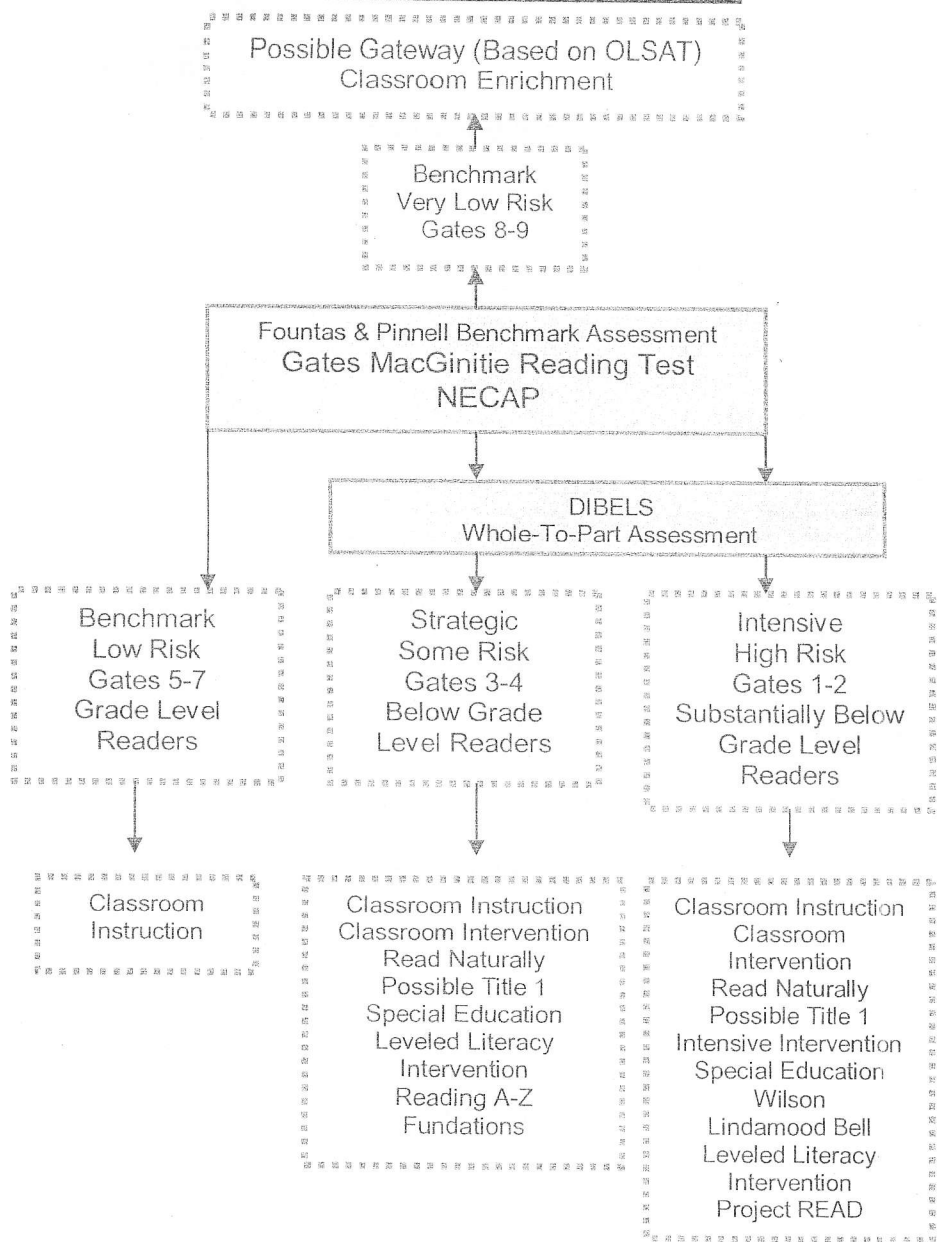
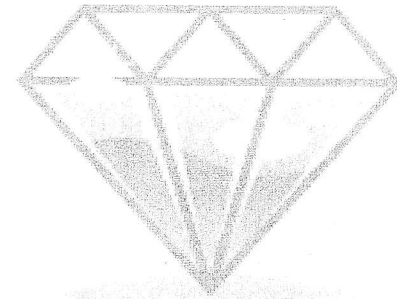


JMES RTI Reading Flowchart



****Interventions are based on data and observations. Interventions should be in place for at least 10-12 weeks. Student progress will be reviewed to determine future interventions and needs****

JAMES MASTRICOLA ELEMENTARY SCHOOL

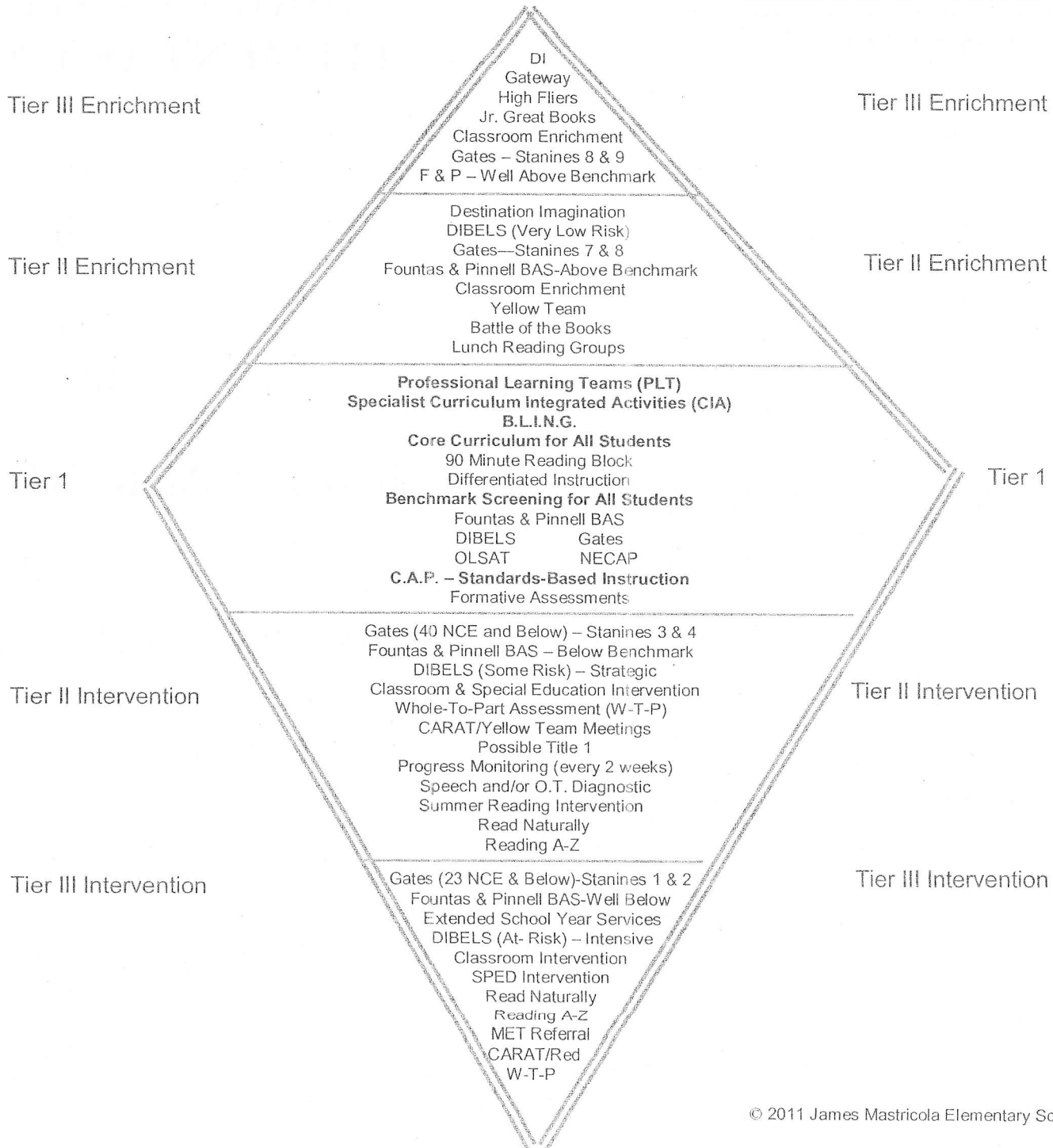
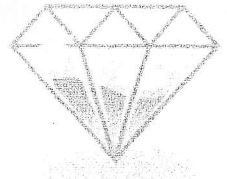
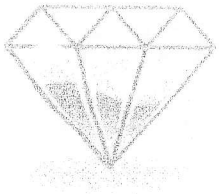


“JMES DIAMOND MODEL”

RESPONSE TO INTERVENTION & ENRICHMENT

WORKING TOGETHER TO PROMOTE
STUDENT ACHIEVEMENT AND TO GROW
RESPONSIBLE LEARNERS.

"JMES DIAMOND MODEL" – *WHERE ALL KIDS SHINE!*



JAMES MASTRICOLA BEHAVIOR MATRIX

	Hallway	Playground	Bathroom	Cafeteria	Library	Field Trips	Assembly	Bus	Emergency	Indoor Recess in hallway	Indoor Recess in classroom
R E S P E C T	Quiet in hallways	Be a good listener Share Wait your turn	Flush Knock on stall door Give others privacy	Cooperate with adults Inside voices	Quiet voices Wait your turn	Cooperate with adults Be a good listener	Display good audience behavior Cooperate with adults Quiet voices during transitions	Inside voices Cooperate with adults	Listen to and cooperate with adults Maintain silence	Cooperate with adults Use inside voices	To be determined by each teacher
S A F E T Y	Walk single file Stay to right Look before opening doors Backpack safety	Follow equipment rules Follow game rules Keep hands and feet to self Dress appropriately	Wash hands when done Sign out sign in	Use good table manners Walk Eat your own food Sit properly	Use equipment as instructed Ask for assistance	Stay with the group Dress appropriately Follow directions About eating Wear name tags	Walk Stay seated until dismissed Keep safe distance from equipment Maintain personal space Sit on bottom	Stay seated on bottom All body parts inside bus	Stay with group Walk quickly and silently Follow directions	Sit without blocking hallway Keep center clear Use games and collectables appropriately Enter classrooms only with an adult	To be determined by each teacher
R S P O N S I B L E	Maintain personal space	Kind words Tell an adult Return equipment	Keep bathroom clean Use bathroom as intended	Maintain personal space Allow anyone to sit next to you Clean up after yourself	Take care of library materials Return materials to proper place	Stay with group Observe boundaries	Show appreciation observe boundaries	Maintain personal space Use appropriate language Keep bus clean	Maintain personal space Take situation seriously	Maintain personal space Allow anyone to sit next to you	To be determined by each teacher